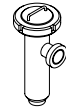




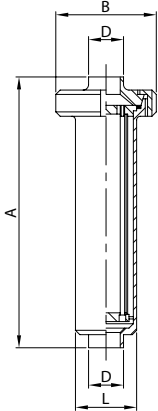
FILTRI  
FILTERS  
FILTRES  
FILTROS



**DIN**

**FILTRO LINEA EL.  
LINE FILTER PE.  
FILTRE DROIT BL.  
FILTRO LÍNEA EL.**

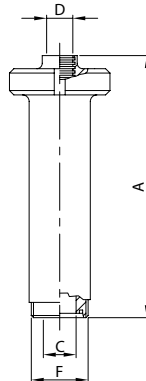
**400 L**



DN	A	B	D	L	gr
28	320,0	112,0	28,0	70,0	3.000
34	320,0	112,0	34,0	70,0	3.000
40	320,0	112,0	40,0	70,0	3.000
52	420,0	112,0	52,0	70,0	3.300
70	516,0	127,0	70,0	85,0	4.650
85	575,0	148,0	85,0	102,0	5.700
101	700,0	148,0	101,6	129,0	7.000
104	700,0	148,0	104,0	129,0	7.000

**FILTRO LINEA EF./BC. MR.  
LINE FILTER ME./TP. EG.  
FILTRE DROIT BF./PC. DR.  
FILTRO LÍNEA ER./C. MR.**

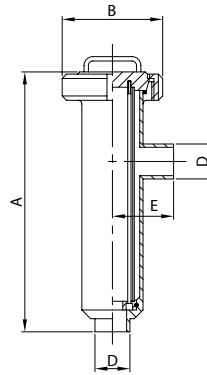
**401 D**



DN	A	C	D	F	gr
25	320,0	25,0	28,0	52-6	3.130
32	320,0	31,0	34,0	58-6	3.170
40	320,0	37,0	40,0	65-6	3.210
50	420,0	49,0	52,0	78-6	3.580
65	521,0	66,0	70,0	95-6	5.030
80	584,0	81,0	85,0	110-4	6.300
100	690,0	97,6	101,6	130-4	8.000
104	690,0	100,0	104,0	130-4	8.000

**FILTRO 90° EL.  
90° FILTER PE.  
FILTRE 90° BL.  
FILTRO 90° EL.**

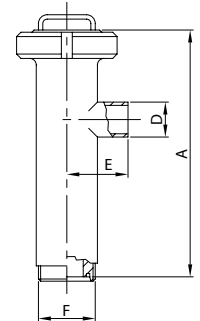
**410 L**



DN	A	B	D	E	gr
28	306,0	112,0	28,0	70,0	3.100
34	306,0	112,0	34,0	70,0	3.100
40	306,0	112,0	40,0	70,0	3.100
52	406,0	112,0	52,0	72,0	3.400
70	503,0	127,0	70,0	85,0	4.800
85	561,0	148,0	85,0	96,0	5.900
101	662,0	148,0	101,6	117,0	7.200
104	662,0	148,0	104,0	117,0	7.200

**FILTRO 90° EF./EL.  
90° FILTER ME./PE.  
FILTRE 90° BF./BL.  
FILTRO 90° ER./EL.**

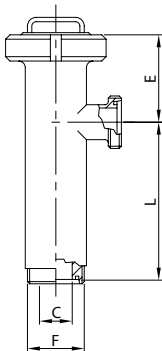
**411 D**



DN	A	D	E	F	gr
25	300,0	28,0	70,0	52-6	3.230
32	300,0	34,0	70,0	58-6	3.270
40	300,0	40,0	70,0	65-6	3.310
50	398,0	52,0	72,0	78-6	3.680
65	495,0	70,0	85,0	95-6	5.180
80	553,0	85,0	96,0	110-4	6.700
100	642,0	101,6	117,0	130-4	8.200
104	642,0	104,0	117,0	130-4	8.200

**FILTRO 90° EF./EF.  
90° FILTER ME./ME.  
FILTRE 90° BF./BF.  
FILTRO 90° ER./ER.**

**412 D**



DN	C	E	F	L	gr
25	25,0	100,0	52-6	200,0	3.360
32	31,0	100,0	58-6	200,0	3.440
40	37,0	100,0	65-6	200,0	3.520
50	49,0	115,0	78-6	283,0	3.960
65	66,0	117,0	95-6	378,0	5.560
80	81,0	131,0	110-4	422,0	7.100
100	97,6	120,0	130-4	522,0	9.200
104	100,0	120,0	130-4	522,0	9.200

**RIVESTIMENTO MESH  
MESH COVERING  
MESH GRILLE  
REVESTIMIENTO MESH**

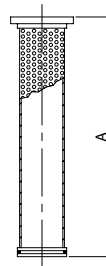
**400 612**



DN	MESH
25/40	100/200 300 400 500
51/52	100/200 300 400 500
63/70	100/200 300 400 500
76/85	100/200 300 400 500
101/104	100/200 300 400 500

**CARTUCCIA FILTRO LINEA  
LINE FILTER CARTRIDGE  
TAMIS FILTRE DROIT  
CARTUCHO FILTRO LÍNEA**

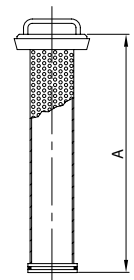
**400 410**



DN	A
25/40	271,0
51/52	371,0
63/70	466,0
76/85	516,0
101/104	621,0

**CARTUCCIA FILTRO 90°  
90° FILTER CARTRIDGE  
TAMIS FILTRE 90°  
CARTUCHO FILTRO 90°**

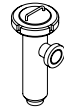
**410 410**



DN	A
25/40	278,0
51/52	378,0
63/70	473,0
76/85	527,0
101/104	636,0



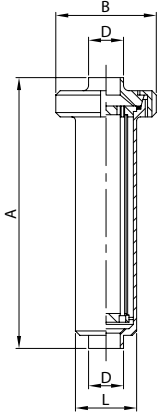
FILTRI  
FILTERS  
FILTRES  
FILTROS



SMS

FILTRO LINEA EL.  
LINE FILTER PE.  
FILTRE DROIT BL.  
FILTRO LÍNEA EL.

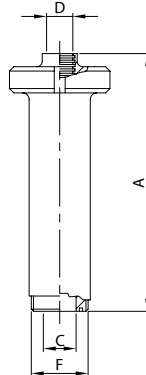
400 L



DN	A	B	D	L	gr
25	320,0	112,0	25,4	70,0	3.000
38	320,0	112,0	38,1	70,0	3.000
51	420,0	112,0	50,8	70,0	3.300
63	516,0	127,0	63,5	85,0	4.650
76	574,0	148,0	76,2	102,0	5.700
101	700,0	148,0	101,6	129,0	7.000

FILTRO LINEA EF./BL. MR.  
LINE FILTER ME./L. EG.  
FILTRE DROIT BF./PL. DR.  
FILTRO LÍNEA ER./C. MR.

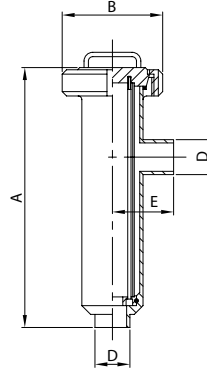
401 S



DN	A	C	D	F	gr
25	327,0	22,4	25,4	40-6	3.070
38	327,0	35,1	38,1	60-6	3.200
51	427,0	47,8	50,8	70-6	3.525
63	529,0	60,5	63,5	85-6	5.040
76	594,0	72,9	76,2	98-6	6.200
101	700,0	97,6	101,6	132-6	8.140

FILTRO 90° EL.  
90° FILTER PE.  
FILTRE 90° BL.  
FILTRO 90° EL.

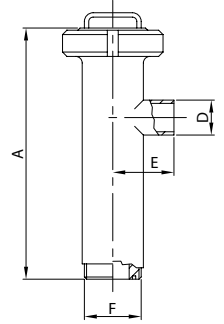
410 L



DN	A	B	D	E	gr
25	307,0	112,0	25,4	70,0	3.100
38	307,0	112,0	38,1	70,0	3.100
51	407,0	112,0	50,8	82,0	3.400
63	503,0	127,0	63,5	85,0	4.800
76	561,0	148,0	76,2	96,0	5.900
101	662,0	148,0	101,6	117,0	7.200

FILTRO 90° EF./EL.  
90° FILTER ME./PE.  
FILTRE 90° BF./BL.  
FILTRO 90° ER./EL.

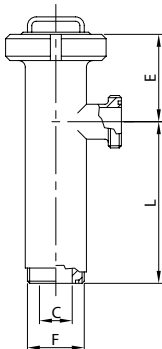
411 S



DN	A	D	E	F	gr
25	306,0	25,4	70,0	40-6	3.170
38	306,0	38,1	70,0	60-6	3.300
51	405,0	50,8	72,0	70-6	3.620
63	503,0	63,5	85,0	85-6	5.190
76	561,0	76,2	96,0	98-6	6.400
101	652,0	101,6	117,0	132-6	8.340

FILTRO 90° EF./EF.  
90° FILTER ME./ME.  
FILTRE 90° BF./BF.  
FILTRO 90° ER./ER.

412 S



DN	C	E	F	L	gr
25	22,4	99,0	40-6	207,0	3.240
38	35,1	99,0	60-6	207,0	3.500
51	47,8	115,0	70-6	290,0	3.850
63	60,5	117,0	85-6	386,0	5.580
76	72,9	131,0	98-6	430,0	6.900
101	97,6	120,0	132-6	532,0	9.480

RIVESTIMENTO MESH  
MESH COVERING  
MESH GRILLE  
REVESTIMIENTO MESH

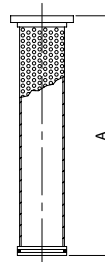
400 612



DN	MESH
25/40	100/200 300 400 500
51/52	100/200 300 400 500
63/70	100/200 300 400 500
76/85	100/200 300 400 500
101	100/200 300 400 500

CARTUCCIA FILTRO LINEA  
LINE FILTER CARTRIDGE  
TAMIS FILTRE DROIT  
CARTUCHO FILTRO LÍNEA

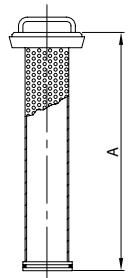
400 410



DN	A
25/40	271,0
51/52	371,0
63/70	466,0
76/85	516,0
101	621,0

CARTUCCIA FILTRO 90°  
90° FILTER CARTRIDGE  
TAMIS FILTRE 90°  
CARTUCHO FILTRO 90°

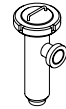
410 410



DN	A
25/40	278,0
51/52	378,0
63/70	473,0
76/85	527,0
101	636,0



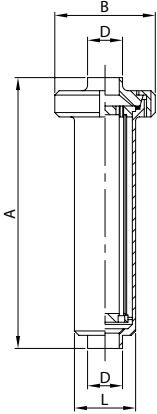
FILTRI  
FILTERS  
FILTRES  
FILTROS



**RJT BS**

FILTRO LINEA EL.  
LINE FILTER PE.  
FILTRE DROIT BL.  
FILTRO LÍNEA EL.

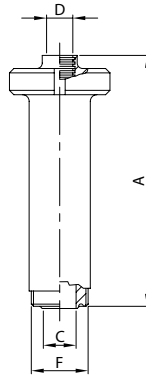
**400 L**



DN	A	B	D	L	gr
25	320,0	112,0	25,4	70,0	3.000
38	320,0	112,0	38,1	70,0	3.000
51	420,0	112,0	50,8	70,0	3.300
63	516,0	127,0	63,5	85,0	4.650
76	574,0	148,0	76,2	102,0	5.700
101	700,0	148,0	101,6	129,0	7.000

FILTRO LINEA EF./BL. MR.  
LINE FILTER ME./L. EG.  
FILTRE DROIT BF./PL. DR.  
FILTRO LÍNEA ER./C. MR.

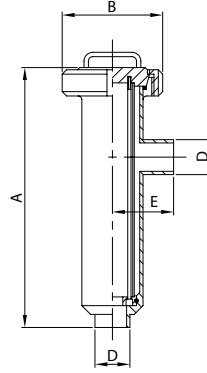
**401 B**



DN	A	C	D	F	gr
25	327,0	22,1	25,4	46-8	3.070
38	327,0	34,8	38,1	58-8	3.200
51	427,0	47,5	50,8	73-6	3.525
63	529,0	60,2	63,5	85-6	5.040
76	594,0	72,9	76,2	98-6	6.200
101	700,0	97,6	101,6	123-6	8.140

FILTRO 90° EL.  
90° FILTER PE.  
FILTRE 90° BL.  
FILTRO 90° EL.

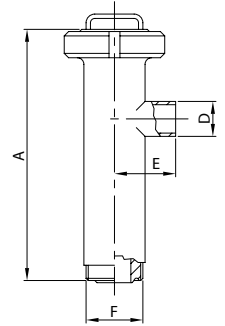
**410 L**



DN	A	B	D	E	gr
25	307,0	112,0	25,4	70,0	3.100
38	307,0	112,0	38,1	70,0	3.100
51	407,0	112,0	50,8	72,0	3.400
63	503,0	127,0	63,5	85,0	4.800
76	561,0	148,0	76,2	96,0	5.900
101	662,0	148,0	101,6	117,0	7.200

FILTRO 90° EF./EL.  
90° FILTER ME./PE.  
FILTRE 90° BF./BL.  
FILTRO 90° ER./EL.

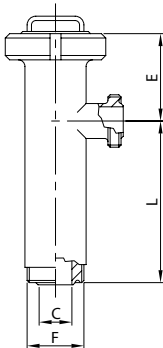
**411 B**



DN	A	D	E	F	gr
25	306,0	25,4	70,0	46-8	3.200
38	306,0	38,1	70,0	58-8	3.250
51	405,0	50,8	72,0	73-6	3.630
63	503,0	63,5	85,0	85-6	5.090
76	561,0	76,2	96,0	98-6	6.260
101	652,0	101,6	117,0	123-6	7.730

FILTRO 90° EF./EF.  
90° FILTER ME./ME.  
FILTRE 90° BF./BF.  
FILTRO 90° ER./ER.

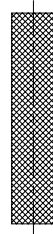
**412 B**



DN	C	E	F	L	gr
25	22,1	99,0	46-8	207,0	3.300
38	34,8	99,0	58-8	207,0	3.400
51	47,5	115,0	73-6	290,0	3.870
63	60,2	117,0	85-6	386,0	5.380
76	72,9	131,0	98-6	430,0	6.630
101	97,6	120,0	123-6	532,0	8.600

RIVESTIMENTO MESH  
MESH COVERING  
MESH GRILLE  
REVESTIMIENTO MESH

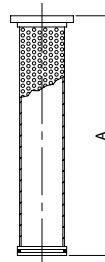
**400 612**



DN	MESH
25/40	100/200 300 400 500
51/52	100/200 300 400 500
63/70	100/200 300 400 500
76/85	100/200 300 400 500
101	100/200 300 400 500

CARTUCCIA FILTRO LINEA  
LINE FILTER CARTRIDGE  
TAMIS FILTRE DROIT  
CARTUCHO FILTRO LÍNEA

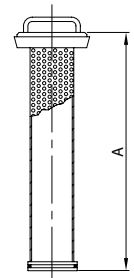
**400 410**



DN	A
25/40	271,0
51/52	371,0
63/70	466,0
76/85	516,0
101	621,0

CARTUCCIA FILTRO 90°  
90° FILTER CARTRIDGE  
TAMIS FILTRE 90°  
CARTUCHO FILTRO 90°

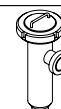
**410 410**



DN	A
25/40	278,0
51/52	378,0
63/70	473,0
76/85	527,0
101	636,0



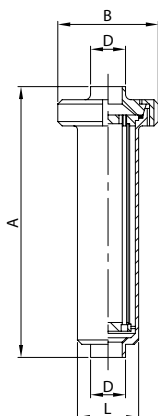
FILTRI  
FILTERS  
FILTRES  
FILTROS



ISS IDF

FILTRO LINEA EL.  
LINE FILTER PE.  
FILTRE DROIT BL.  
FILTRO LÍNEA EL.

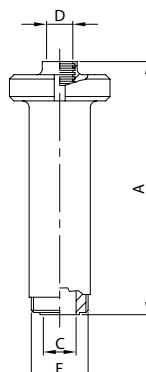
400 L



DN	A	B	D	L	gr
25	320,0	112,0	25,4	70,0	3.000
38	320,0	112,0	38,1	70,0	3.000
51	420,0	112,0	50,8	70,0	3.300
63	516,0	127,0	63,5	85,0	4.650
76	574,0	148,0	76,2	102,0	5.700
101	700,0	148,0	101,6	129,0	7.000

FILTRO LINEA EF./BL. MR.  
LINE FILTER ME./L. EG.  
FILTRE DROIT BF./PL. DR.  
FILTRO LÍNEA ER./C. MR.

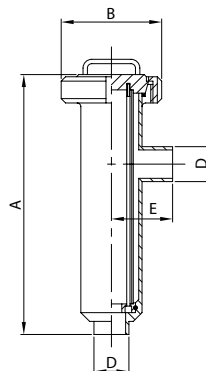
401 I



DN	A	C	D	F	gr
25	327,0	22,1	25,4	37-8	3.050
38	327,0	34,8	38,1	50-8	3.100
51	427,0	47,5	50,8	64-8	3.420
63	529,0	60,2	63,5	77-8	4.845
76	594,0	72,9	76,2	91-8	5.960
101	700,0	97,6	101,6	118-8	7.520

FILTRO 90° EL.  
90° FILTER PE.  
FILTRE 90° BL.  
FILTRO 90° EL.

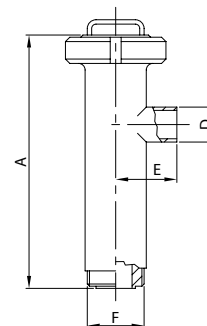
410 L



DN	A	B	D	E	gr
25	307,0	112,0	25,4	70,0	3.100
38	307,0	112,0	38,1	70,0	3.100
51	407,0	112,0	50,8	72,0	3.400
63	503,0	127,0	63,5	85,0	4.800
76	561,0	148,0	76,2	96,0	5.900
101	662,0	148,0	101,6	117,0	7.200

FILTRO 90° EF./EL.  
90° FILTER ME./PE.  
FILTRE 90° BF./BL.  
FILTRO 90° ER./EL.

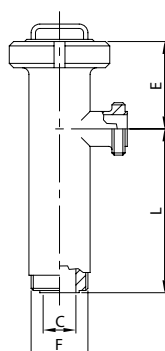
411 I



DN	A	D	E	F	gr
25	306,0	25,4	70,0	37-8	3.150
38	306,0	38,1	70,0	50-8	3.200
51	405,0	50,8	72,0	64-8	3.520
63	503,0	63,5	85,0	77-8	4.990
76	561,0	76,2	96,0	91-8	6.160
101	652,0	101,6	117,0	118-8	7.720

FILTRO 90° EF./EF.  
90° FILTER ME./ME.  
FILTRE 90° BF./BF.  
FILTRO 90° ER./ER.

412 I



DN	C	E	F	L	gr
25	22,1	99,0	37-8	207,0	3.200
38	34,8	99,0	50-8	207,0	3.300
51	47,5	115,0	64-8	290,0	3.620
63	60,2	117,0	77-8	386,0	5.190
76	72,9	131,0	91-8	430,0	6.420
101	97,6	120,0	118-8	532,0	8.240

RIVESTIMENTO MESH  
MESH COVERING  
MESH GRILLE  
REVESTIMIENTO MESH

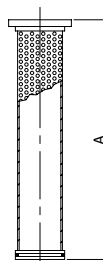
400 612



DN	MESH
25/40	100/200 300 400 500
51/52	100/200 300 400 500
63/70	100/200 300 400 500
76/85	100/200 300 400 500
101	100/200 300 400 500

CARTUCCIA FILTRO LINEA  
LINE FILTER CARTRIDGE  
TAMIS FILTRE DROIT  
CARTUCHO FILTRO LÍNEA

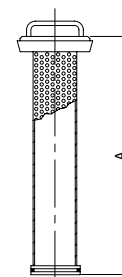
400 410



DN	A
25/40	271,0
51/52	371,0
63/70	466,0
76/85	516,0
101	621,0

CARTUCCIA FILTRO 90°  
90° FILTER CARTRIDGE  
TAMIS FILTRE 90°  
CARTUCHO FILTRO 90°

410 410

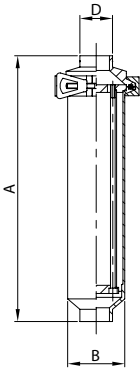


DN	A
25/40	278,0
51/52	378,0
63/70	473,0
76/85	527,0
101	636,0



FILTRO LINEA EL.  
 LINE FILTER PE.  
 FILTRE DROIT BL.  
 FILTRO LÍNEA EL.

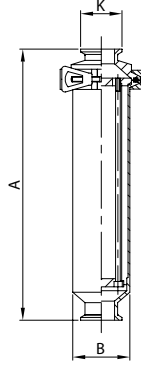
**W42**



DN	A	B	D	gr
1" 25	326,0	70,0	25,4	3.000
1 1/2" 38	326,0	70,0	38,1	3.000
2" 51	426,0	70,0	50,8	3.300
2 1/2" 63	524,5	85,0	63,5	4.650
3" 76	568,0	101,0	76,2	5.700

FILTRO LINEA E. SM.  
 LINE FILTER E. FR.  
 FILTRE DROIT B. FR.  
 FILTRO LÍNEA E. SM.

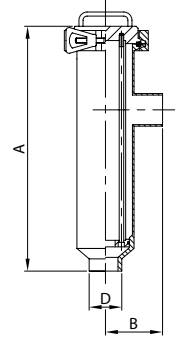
**K42**



DN	A	B	K	gr
1" 25	326,0	70,0	50,5	3.170
1 1/2" 38	326,0	70,0	50,5	3.300
2" 51	426,0	70,0	64,0	3.620
2 1/2" 63	524,5	85,0	77,5	5.190
3" 76	568,0	101,0	91,0	6.400

FILTRO 90° EL.  
 90° FILTER PE.  
 FILTRE 90° BL.  
 FILTRO 90° EL.

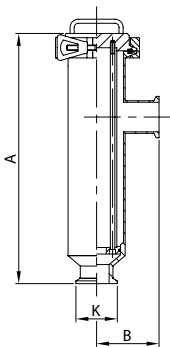
**W43**



DN	A	B	D	gr
1" 25	304,0	70,0	25,4	3.100
1 1/2" 38	304,0	70,0	38,1	3.100
2" 51	404,0	72,0	50,8	3.400
2 1/2" 63	497,0	85,0	63,5	4.800
3" 76	548,0	96,0	76,2	5.900

FILTRO 90° E. SM.  
 90° FILTER E. FR.  
 FILTRE 90° B. FR.  
 FILTRO 90° E. SM.

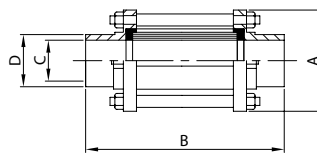
**K43**



DN	A	B	K	gr
1" 25	304,0	82,7	50,5	3.240
1 1/2" 38	304,0	82,7	50,5	3.500
2" 51	404,0	84,7	64,0	3.850
2 1/2" 63	497,0	97,7	77,5	5.590
3" 76	548,0	108,7	91,0	6.900

SPECOLA EL.  
 SIGHT GLASS PE.  
 REGARD BL.  
 MIRILLA EL.

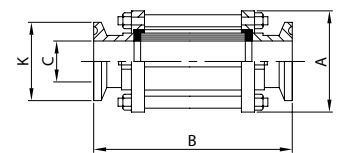
**W45**



DN	A	B	C	D	gr
1" 25	55,0	147,0	22,1	25,4	400
1 1/2" 38	70,0	153,0	34,8	38,1	620
2" 51	85,0	153,0	47,5	50,8	860
2 1/2" 63	95,0	163,0	60,2	63,5	950
3" 76	105,0	173,0	72,9	76,2	1.100
4" 101	140,0	173,0	97,4	101,6	2.760

SPECOLA E. SM.  
 SIGHT GLASS E. FR.  
 REGARD B. FR.  
 MIRILLA E. SM.

**K45**



DN	A	B	C	K	gr
1" 25	55,0	165,0	22,1	50,5	560
1 1/2" 38	70,0	165,0	34,8	50,5	760
2" 51	85,0	165,0	47,5	64,0	1.050
2 1/2" 63	95,0	165,0	60,2	77,5	1.180
3" 76	105,0	165,0	72,9	91,0	1.400
4" 101	140,0	165,0	97,4	119,0	3.260